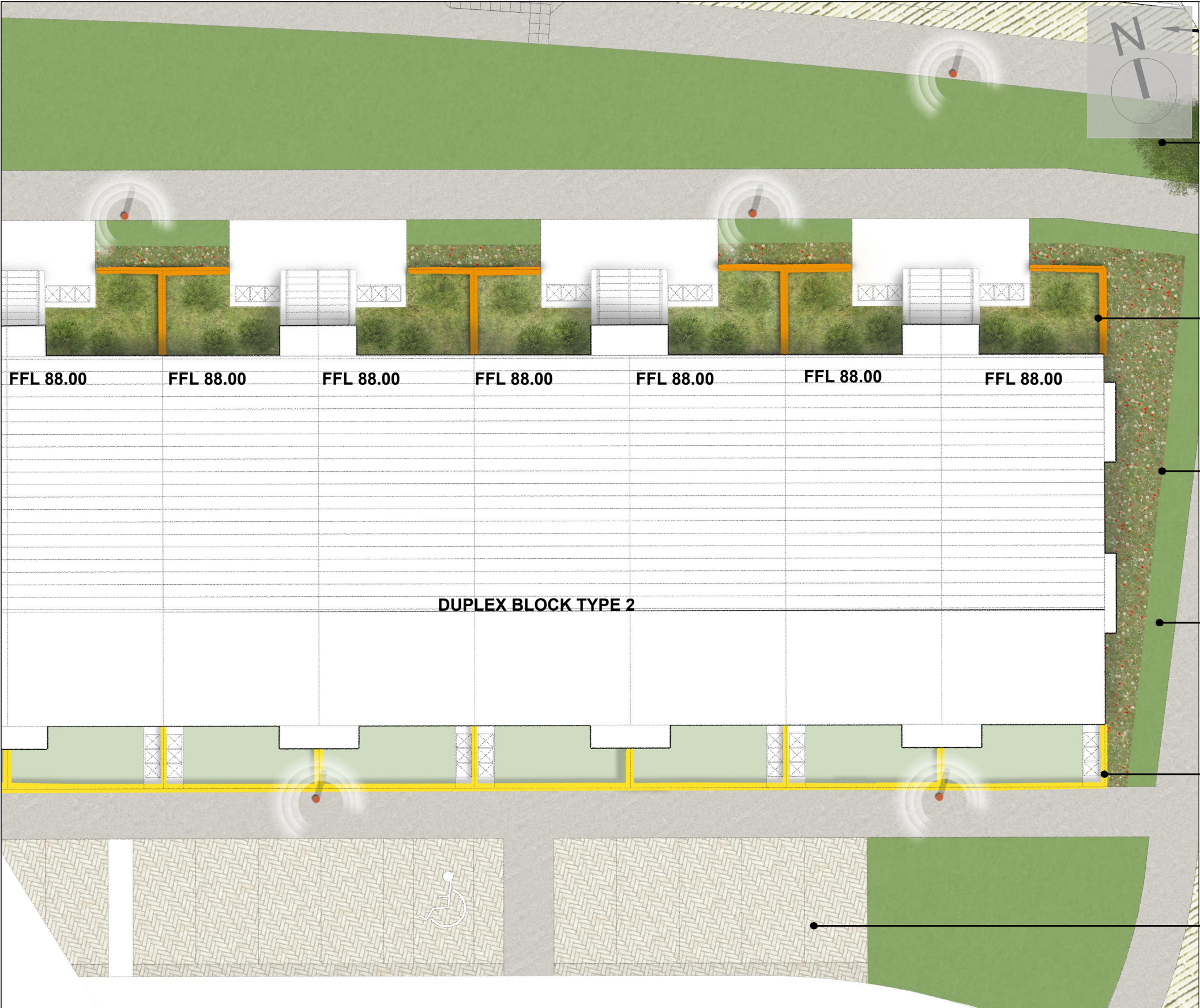


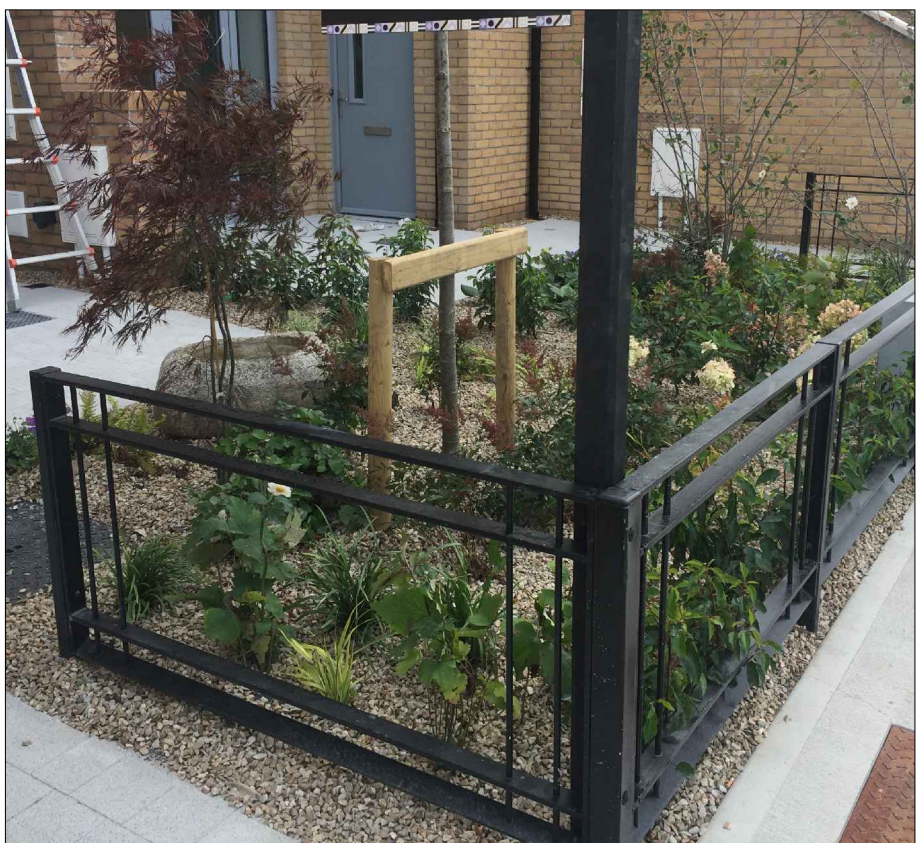
LEGEND	
	RED LINE BOUNDARY
	600 MM HIGH RAILING(MS PAINTED BLACK) TO FRONT GARDENS
	1200 MM HIGH BRICK/RENDERED WALL TO REAR GARDENS
	2000mm HIGH BRICK WALL WITH CAPPING
	2000mm HIGH RENDERED WALL WITH CAPPING
	1800mm HIGH CONC. POST & CONC. PANEL FENCE
	2000mm HIGH WALL WITH GATED ACCESS
	SITE PLAN TO ARCHITECT'S LAYOUT
	BITMAC SURFACE TO ACCESS ROAD TO ENG. SPEC.
	PROPOSED CONCRETE FOOTPATH
	PROPOSED HOME ZONE PERMEABLE PAVING TO ENG. SPEC.
	PROPOSED PERMEABLE PAVING TO ENG. SPEC.
	PROPOSED PAVING TO COURTYARD TO FUTURE SPEC.
	PROPOSED BOUND GRAVEL / BITMAC PATH
	PROPOSED LAWN AREA
	PROPOSED SHRUB/ WILDFLOWER AREA
	PROPOSED REAR GARDENS
	PROPOSED TREES/ MULTISTEM
	EXISTING TREES RETAINED TO ARB. DRAWING
	ROOT PROTECTION AREA TO ARB. DRAWING
	EXISTING TREES REMOVED TO ARB. DRAWING
	PROPOSED HEDGE
	PROPOSED BIKE STANDS

PLANTING PLAN DETAIL 3- DUPLEX BLOCK (Scale 1:200 @ A1)



- Proposed tree planting
- Proposed 600 mm high railing (MS painted black) to front garden - Refer to Detail 5 - DWG 306
- Proposed shrub planting
- Proposed lawn area
- Proposed 1200 mm high brick/ rendered wall to rear gardens - Refer to Detail 7 - DWG 306
- Proposed permeable paving to parking area (to eng. spec.)

BOUNDARY TREATMENTS CONCEPT IMAGES



FRONT GARDEN PLANTING SCHEDULE

1554 Front Garden _Planting Schedule				
Ref.	Qty.	Name	Density	Size
Supply and Protect the following trees (Rootballed unless specified)				
All Plant materials to Landscape Architects approval				
Specimen Shrubs				
SS01		Arbutus unedo	as shown	20 ltr.cg
SS02		Nandina domestica	as shown	20 ltr.cg
SS03		Cistus x hybridus	as shown	5 ltr.cg
SS04		Abelia x grandiflora	as shown	5 ltr.cg
SS05		Fuchsia 'Mrs Popple'	as shown	5 ltr.cg
SS06		Hydrangea paniculata 'Limelight'	as shown	5 ltr.cg
Clipped Shrub (Single row, 500 mm centers)				
CS01		Buxus sempervirens	2/l.m.	5 ltr.cg
Hedges (Doubel Staggered Row)				
H01		Prunus lusitanica	5/l.m	RB,120-150mm
Grasses				
G01		Chionocloa falvicans	5/sq.m.	2 ltr.cg
Perennials				
Option A (sunny aspect)				
P01		Achillea moonshine	5/sq.m.	2 ltr.cg
P02		Anthemmis buxtons variety	5/sq.m.	2 ltr.cg
P03		Campanula glomerata 'Superba'	5/sq.m.	2 ltr.cg
P04		Hellenium 'The Bishop'	5/sq.m.	2 ltr.cg
Option B (shaded aspect)				
P05		Anemone x hybrida c.vars	5/sq.m.	2 ltr.cg
P06		Anthemmis buxtons variety	5/sq.m.	2 ltr.cg
P07		Digitalis purpurea 'Dalmation white'	5/sq.m.	2 ltr.cg
P08		Astrantia 'Buckland'	5/sq.m.	2 ltr.cg
Note:				
All tree material must be accompanied by an Irish Provenance Certification				

rev | drawn | date | description

© COPYRIGHT
This drawing and any design hereon is copyright of the big space ltd and must not be reproduced in whole or in part without their express written consent.

DIMENSIONS
Figured dimensions only to be taken from this drawing. All dimensions to be checked on site. Landscape Architect to be informed immediately of any discrepancies before work proceeds.

TBS

landscape architecture
urbanism + landscape planning

The Big Space
creative dock
malahide marina village
malahide co. dublin
T +353 (0)1 806 1840
E info@tbsstudio.com
W www.tbsstudio.com

Status

job
GREAT CONNELL SHD, NEWBRIDGE

org
FRONT GARDEN
DETAIL PLAN & PLANTING SCHEDULE

Date APR 2022	Des. RD	Chd. DE	Passed DE	Scales As shown
Job No. 1554	Drawing No. 309	Rev. 7		

Notes